

TO: Carrie Sheets

FROM: Marc Buchanan

@ Sanco Industries

EMAIL: marc.buchanan@acculabel.com

START DATE: 3.23.26

EMAILED: 3.23.26

PHONE NO. (260) 482-5223

**PROOF**

**PART NUMBER: 00444\_4002**

**DATE: 3.23.26**

MAGENTA STROKE INDICATES DIE CUT (DOES NOT PRINT)

5.875"

COPPER GROUP NOT CLASSIFIED HERBICIDE

# Crystal Plex<sup>®</sup>

## Algae Control


Treats Livestock Water Supplies

Water treated with this product may be used for swimming, fishing and irrigation. For use in: lakes; reservoirs destined for drinking water; swimming areas; canals, ditches, and laterals.

CLEAN, CLEAR AND

Crystal Blue<sup>®</sup>

Premium Aquatic Chemicals



1  
0  
L  
2  
4  
1  
0  
2  
0  
5  
2

FIRST AID

**If in Eyes:** Hold eye open and rinse slowly and gently with water for 15-20 minutes. Remove contact lenses, if present, after the first 5 minutes, then continue rinsing eye. Call a poison control center or doctor for treatment advice. **If on Skin or Clothing:** Take off contaminated clothing. Rinse skin immediately with plenty of water for 15-20 minutes. Call a poison control center or doctor for treatment advice. **If Swallowed:** Call a poison control center or doctor immediately for treatment advice. Have person sip a glass of water if able to swallow. Do not induce vomiting unless told to do so by a poison control center or doctor. Do not give anything by mouth to an unconscious person. Have the product container or label with you when calling a poison control center or doctor or going for treatment. You may also contact 1-800-255-3924 for emergency medical treatment information.

NOTE TO PHYSICIAN: Probable mucosal damage may contraindicate the use of gastric lavage.


KEEP OUT OF REACH OF CHILDREN

DANGER

See attached booklet for additional Precautionary Statements

EPA Reg. No. 83190-1-72838  
EPA Est. No. 072838-IN-003

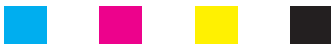
Distributed by:  
Sanco Industries, Inc.  
P.O. Box 11617  
Fort Wayne, IN 46859



7 68980 00444 8

Net Contents: 1 Gallon (3.78 Liters)

5.875"



**INK COLORS:** CYAN, MAGENTA, YELLOW, BLACK

**STOCK:** 2.6 MIL WHITE BOPP

**ADHESIVE:** PERMANENT

**LAMINATION/VARNISH:**

**LABEL SIZE:** 5.875" x 5.875"

**ROLL DIRECTION** →

**UNWIND 3**



RIGHT SIDE  
OFF ROLL FIRST

This proof is a representation of how final printing will appear, colors are not exact. For exact color, refer to a Pantone Matching System<sup>®</sup> Color Guide. Please proofread this artwork carefully for the accuracy of its content. Accu-Label shall not assume responsibility for errors processed per your approval. Indicate any changes and/or corrections on this proof. Sign, date and email back to graphics@acculabel.com. Thank you.

Okay As Is    Okay W/Corrections    New Proof

Client Signature: Carrie Sheets

Date: 3-24-26

**KEEP OUT OF REACH OF CHILDREN  
DANGER  
MANTENER FUERA DEL ALCANCE DE LOS NIÑOS  
PELIGRO**

See inside for additional Precautionary Statements and complete Directions for Use.

**FIRST AID**

**If in Eyes:** Hold eye open and rinse slowly and gently with water for 15-20 minutes. Remove contact lenses, if present, after the first 5 minutes, then continue rinsing eye. Call a poison control center or doctor for treatment advice.

**If on Skin or Clothing:** Take off contaminated clothing. Rinse skin immediately with plenty of water for 15-20 minutes. Call a poison control center or doctor for treatment advice.

**If Swallowed:** Call a poison control center or doctor immediately for treatment advice. Have person sip a glass of water if able to swallow. Do not induce vomiting unless told to do so by a poison control center or doctor. Do not give anything by mouth to an unconscious person.

Have the product container or label with you when calling a poison control center or doctor or going for treatment. [You may also contact 1-800-255-3924 for emergency medical treatment information.]

NOTE TO PHYSICIAN: Probably mucosal damage may contraindicate the use of gastric lavage.

**Primeros Auxilios**

**Si entra en contacto con los ojos:** Mantenga el ojo abierto y enjuáguelo lenta y cuidadosamente con agua, durante 15 a 20 minutos. Si utiliza lentes de contacto, retírelos después de los primeros 5 minutos, luego continúe enjuagando el ojo. Llame al centro de control de envenenamientos o a un médico para consejo de tratamiento.

**Si está en la piel o en la ropa:** Quítese la ropa contaminada. Enjuague la piel inmediatamente con bastante agua por 15-20 minutos. Llame al centro de control de envenenamientos o a un médico para consejo de tratamiento.

**Si se ingiere:** Llame inmediatamente a un centro de control de envenenamientos o a un médico para consejo de tratamiento. Si la persona puede tragar, haga que tome pequeños sorbos de agua. No induzca el vómito a menos que así se lo indique un centro de control de envenenamientos o un médico. No administre nada por vía oral a una persona inconsciente.

Cuando llame a un centro de control de envenenamientos, o a un médico, o intente obtener tratamiento, tenga a la mano el envase o la etiqueta del producto.

Para más información sobre el tratamiento médico de emergencia, también puede comunicarse al 1-800-255-3924.

## **PRECAUTIONARY STATEMENTS**

### **HAZARDS TO HUMANS AND DOMESTIC ANIMALS**

#### **DANGER**

Corrosive. Causes irreversible eye damage. Causes skin irritation. Do not get in eyes or on clothing. Harmful if swallowed. Harmful if absorbed through skin. Wear goggles or face shield, long-sleeved shirt and long pants, socks, shoes and waterproof gloves.

For applications in waters destined for use as drinking water, those waters must receive additional and separate potable water treatment. Do not apply more than 1.0 ppm as metallic copper (4.0 ppm of this product) in these waters.

For 24-hour assistance or information regarding spill, leak, fire, or exposure to this product, please call Chem-Tel at 1-800-255-3924.

### **Declaraciones de precaución**

#### **Riesgos para los seres humanos y animales domésticos**

#### **PELIGRO**

Corrosivo. Causa daño ocular irreversible. Causa irritación en la piel.

No permita que caiga en los ojos o la ropa. Dañino si se ingiere.

Dañino si se absorbe por la piel.

Utilice gafas de seguridad o escudo protector de cara, camisa de manga larga y pantalones largos, calcetines, zapatos y guantes impermeables.

Para aplicaciones en aguas destinadas a su uso como agua potable, dichas aguas deben recibir un tratamiento adicional e independiente para potabilización. No aplique más de 1,0 ppm, expresado como cobre metálico (4,0 ppm de este producto), en estas aguas.

Para asistencia las 24 horas o información sobre derrames, fugas, incendios o exposición a este producto, por favor llame al Chem-Tel at 1-800-255-3924.

#### **ENVIRONMENTAL HAZARDS**

This pesticide is toxic to fish and aquatic invertebrates. Waters treated with this product may be hazardous to aquatic organisms. Treatment of aquatic weeds and algae can result in oxygen loss from decomposition of dead algae and weeds. This oxygen loss can cause fish and invertebrate suffocation. To minimize this hazard, do not treat more than ½ of the water body to avoid depletion of oxygen due to decaying vegetation. Wait at least 14 days between treatments. Begin treatment along the shore and proceed outwards in bands to allow fish to move into untreated areas. Consult with the State or local agency with primary responsibility for regulating pesticides before applying to public waters, to determine if a permit is required.

#### **PELIGROS AMBIENTALES**

Este pesticida es tóxico hacia peces e invertebrados acuáticos. Las aguas tratadas con este producto pueden resultar peligrosas para los organismos acuáticos. El tratamiento de malezas acuáticas y algas puede provocar una pérdida de oxígeno debido a la descomposición de las algas y malezas muertas. Esta pérdida de oxígeno puede causar la asfixia de peces e invertebrados. Para minimizar este riesgo, no trate más de la mitad del cuerpo de agua, a fin de evitar el agotamiento del oxígeno provocado por la vegetación en descomposición. Espere al menos 14 días entre tratamientos. Comience el tratamiento a lo largo de la orilla y avance hacia el interior en franjas, para permitir que los peces se desplacen hacia las áreas no tratadas. Consulte con la agencia estatal o local que tenga la responsabilidad principal de regular los plaguicidas antes de realizar aplicaciones en aguas públicas, para determinar si se requiere un permiso.

Advertencia sobre peces: Este producto a base de cobre es tóxico para los peces y los organismos acuáticos. A diferencia de la mayoría de los plaguicidas orgánicos, el cobre es un elemento que no se degrada en el medio ambiente y, por consiguiente, se acumulará en los sedimentos con las aplicaciones repetidas. El cobre es un micronutriente; sin embargo, la dosis de aplicación como plaguicida excede la cantidad de cobre necesaria como nutriente.

Ciertas condiciones del agua —incluyendo un pH bajo ( $\leq 6,5$ ), niveles bajos de carbono orgánico disuelto (COD) (3,0 mg/L o menos) y aguas blandas (es decir, con una alcalinidad inferior a 50 mg/L)— aumentan la toxicidad aguda potencial para los organismos acuáticos no objetivo.

**Fish Advisory Statement:** This copper product is toxic to fish and aquatic organisms. Unlike most organic pesticides, copper is an element and will not break down in the environment and will therefore accumulate in sediment with repeated applications. Copper is a micronutrient, but its pesticidal application rate exceeds the amount of copper needed as a nutrient.

Certain water conditions including low pH ( $\leq 6.5$ ), low dissolved organic carbon (DOC) levels (3.0 mg/L or lower), and “soft” waters (i.e., alkalinity less than 50 mg/L), increases the potential acute toxicity to non-target aquatic organisms.

## **DIRECTIONS FOR USE**

It is a violation of Federal Law to use this product in a manner inconsistent with its labeling. Do not apply this product in a way that will contact adults, children or pets, either directly or through drift. Do not allow adults, children or pets to enter the treated areas until sprays have settled.

This product is corrosive to cotton fabrics. Do not allow clothing to come in contact with concentrate or dilution. Application, handling, or storage equipment **MUST** consist of fiberglass, PVC's, polypropylenes, viton, most plastics, or stainless steel. Never use mild steel, nylon, brass, or copper around full strength of this product. Wash spray equipment after each application.

## **INSTRUCCIONES DE USO**

Es una violación de la ley federal utilizar este producto de manera inconsistente con lo indicado en su etiqueta. No aplique este producto de manera que entre en contacto con adultos, niños o mascotas, ya sea directamente o por deriva. No permita que adultos, niños o mascotas ingresen a las áreas tratadas hasta que las pulverizaciones se hayan depositado. Este producto es corrosivo para los tejidos de algodón. Evite que la ropa entre en contacto con el producto concentrado o diluido. Los equipos de aplicación, manipulación o almacenamiento **DEBEN** estar fabricados con fibra de vidrio, PVC, polipropileno, Viton, la mayoría de los plásticos o acero inoxidable. Nunca utilice acero dulce, nailon, latón o cobre en presencia del producto sin diluir. Lave el equipo de pulverización después de cada aplicación.

## **STORAGE AND DISPOSAL**

Do not contaminate water, food, or feed by storage or disposal.

**Pesticide Storage:** This product is a concentrate and must be stored in its original container or handled and stored as outlined above. **Do not allow this product to freeze; freezing may cause product separation.**

Keep container closed when not in use. In case of a spill, neutralize with limestone or baking soda before disposal. May deteriorate concrete.

**Pesticide Disposal:** *If partly filled* – Call your local solid waste agency for disposal instructions. Never place unused product down any indoor or outdoor drain.

**Container Disposal:** *If empty* – Nonrefillable container. Do not reuse or refill this container. Place in trash or offer for recycling if available.

### **ALMACENAMIENTO Y DESECHO**

No contamine agua, comida, ni forrajes mediante el almacenamiento o desecho.

**Almacenamiento de pesticidas:** Este producto es un concentrado y debe almacenarse en su envase original, o bien manipularse y almacenarse según se indica anteriormente. No permita que este producto se congele; la congelación puede provocar la separación del producto.

Mantenga el recipiente cerrado cuando no esté en uso. En caso de derrame, neutralice con piedra caliza o bicarbonato de sodio antes de su eliminación. Puede deteriorar el concreto.

**Desecho de pesticidas: Si está parcialmente lleno:** llame a su agencia local de desechos sólidos para instrucciones de eliminación. Nunca deseche el producto no utilizado en ningún desagüe interior o exterior.

**Eliminación del envase: Si está vacío:** Envase no rellenable. No reutilice ni rellene este envase. Tire a la basura u ofrezca para el reciclaje si es posible.

### **RESISTANCE MANAGEMENT**

Water bodies or management units should be scouted prior to application to identify the weed species present and their growth stage to determine if the intended application will be effective. Water bodies or management units should be scouted after application to verify that the treatment was effective.

Suspected herbicide-resistant weeds may be identified by these indicators:

- Failure to control a weed species normally controlled by the herbicide at the dose applied, especially if control is achieved on adjacent weeds;
- A spreading patch of non-controlled plants of a particular weed species; and
- Surviving plants mixed with controlled individuals of the same species.

Report any incidence of non-performance of this product against a particular weed species to your [registrant]retailers or representative. If resistance is suspected, treat weed escapes with an herbicide having a different mechanism of action and/or use non-chemical means to remove escapes, as practical, with the goal of preventing further reproduction.

Implement the Early Detection, Rapid Response practice and Maintenance Control by using the following practices where possible:

- Identify weeds present in a management unit through scouting or history of the water body and understand the biology of target species.
- Applications should target weeds when populations are small and there is low biomass, early in the season to maximize efficacy.
- Applications should be made so that the herbicide contacts the weed. Use the appropriate application method for the use site/weed/chemical combination.
- Weed escapes should not be allowed to go to seed or produce asexual vegetative propagules.
- Use a diversified approach toward weed management. Whenever possible incorporate multiple weed-control practices such as mechanical control, biological management practices, and rotation of MOAs.
- Time applications to have the highest probability for control and minimize need for follow-up control measures. Apply during conditions that minimize herbicide degradation (light/temperature/microbes) and/or dissipation (water exchange).

Contact your local sales representative, local water management agency, or extension agent to find out if suspected resistant weeds to this MOA have been found in your region. If resistant biotypes of target weeds have been reported, use the application rates of this product specified for your local conditions. Tank mix products so that there are multiple effective mechanisms of actions for each target weed.

### **INFORMATION**

**Do not use in residential ornamental fish ponds or other artificial aquaculture systems containing Koi or trout.**

**This product** is effective in controlling a broad range of algae including; *Chara*, *Spirogyra*, *Cladophora*, *Ulothrix*, and *Oscillatoria*.

In addition, **this product** is effective in controlling rooted and floating aquatic plants such as *Hydrilla*, *Potamogeton sp.*, and Water Hyacinth.

Water treated with **this product** may be used for swimming, fishing, drinking, livestock watering, and irrigation. For best results, apply when livestock water consumption is low or watering area is not in use. **This product** effectively controls *Chara*, *Spirogyra*, *Cladophora*, *Ulothrix* and *Oscillatoria*; algae growth commonly found in livestock watering tanks, troughs, and ponds.

#### **Aquatic Uses (excluding swimming pools, spas, hot tubs, fountains and aquatic agriculture)**

Waters treated with this product may be hazardous to aquatic organisms. Treatment of aquatic weeds and algae can result in oxygen loss from decomposition of dead biomass. This oxygen loss can cause fish and invertebrate suffocation. To minimize this hazard, do not treat more than ½ of the water body and wait at least 14 days between treatments to avoid depletion of oxygen due to decaying vegetation (excluding water infrastructure and constructed conveyances such as drainage and irrigation canals, ditches and pipelines or intakes and aqueducts for drinking water or irrigation use). Begin treatment along the shore and proceed outward in bands to allow fish to

move into untreated areas. Consult with the state or local agency with primary responsibility for regulating pesticides before applying to public waters to determine if a permit is required. Application of algaecides to high density blooms of cyanobacteria can result in the release of intracellular contents into the water. Some of these intracellular compounds are known mammalian hepato- and nervous system toxins. Therefore, to minimize the risk of toxin leakage, manage cyanobacteria effectively in order to avoid applying this product when blooms of toxin-producing cyanobacteria are present at high density. In situations where rapidly reproducing toxic algal species pose a public health threat to drinking or recreational water resources, applicators must receive authorization from applicable state, local or tribal water resources authorities to apply copper at intervals shorter than 14 days should the circumstance demand.

Certain water conditions including low pH ( $\leq 6.5$ ), low dissolved organic carbon (DOC) levels (3.0 mg/L or lower), and “soft” waters (i.e., alkalinity less than 50 mg/L), increases the potential acute toxicity to non-target aquatic organisms. The application rates on this label are appropriate for water with pH values  $> 6.5$ , DOC levels  $> 3.0$  mg/L, and alkalinity greater than 50 mg/L. Avoid treating waters with pH values  $< 6.5$ , DOC levels  $< 3.0$  mg/L, and alkalinity less than 50 ppm (e.g., soft or acid waters), as trout and other sensitive species of fish may be killed under such conditions if present.

Consult your state department of natural resources or fish and game agency before applying this product to public waters. Permits may be required before treating such waters.

**Pre-Application Dose Determination:** For algae and aquatic plant treatments, applicators should conduct initial dose determination tests simulating a full-scale treatment program to determine the minimum efficacious concentrations for eliminating the target species, unless an effective dose is already known for the given target pest population.

**Applications to Whole Water Body:** Maximum annual application rate of 21.9 lbs. of metallic copper per acre-foot (8 applications per year at up to 1 ppm). This rate/frequency is calculated based on staggering the treatment of each half of the water body every 14 days (at a rate of 2.74 lbs. metallic copper per acre-foot = 1 ppm) for eight months (244 days). In situations where rapidly reproducing toxic algal species pose a public health threat to drinking or recreational water resources, applicators must receive authorization from applicable state, local or tribal water resources authorities to apply copper in excess of 21.9 lbs. of metallic copper per acre-foot (8 applications per year at up to 1 ppm).

**Applications to Waterbody Sections:** Maximum annual rate of 46.6 lbs. of metallic copper per acre-foot per year (17 applications per year at up to 1 ppm). This rate/frequency is calculated based on the maximum number of possible applications allowed based on a 14-day minimum (at a rate of 2.74 lbs. metallic copper per acre-foot = 1 ppm) retreatment interval for eight months (244 days). Do not apply more than 46.6 lbs. of metallic copper to a water management unit, regardless of the pest(s) targeted by applications. In situations where rapidly reproducing toxic algal species pose a public health threat to drinking or recreational water resources, applicators must receive authorization from applicable state, local or tribal water resources authorities to apply copper in excess of 46.6 lbs. of metallic copper per acre-foot per year for a single water management unit.

## ALGAECIDE APPLICATION

**This product** can be applied by simply pouring into the water, as a surface spray, or by injection. For effective control, the proper chemical concentration should be maintained for a minimum of three hours duration to assure adequate uptake. The application rates in the chart below are based on static or low flow conditions. When significant dilution occurs from inflow of untreated waters within the three-hour period the chemical may need to be metered. (See drip system application)

- Identify the algae growth present as one of the following: planktonic, filamentous, or *Chara*.
- Determine the surface area and average depth to be treated.
- Refer to the chart below to determine the amount of **this product** to apply per 1000 sq. ft. of surface area.

**CHART 1**

**Application Rates  
Amount of this product per 1,000 Sq. Ft. Surface Area**

Algae Type	ppm metallic Copper	Average Depth in Feet			
		1 ft.	2 ft.	3 ft.	4 ft.
Planktonic	0.2	3.5 fl. oz.	6.5 fl. oz.	9.5 fl. oz.	13.0 fl. oz.
Filamentous	0.2	3.5 fl. oz.	6.5 fl. oz.	9.5 fl. oz.	13.0 fl. oz.
<i>Chara</i>	0.4	6.5 fl. oz.	13.0 fl. oz.	19.0 fl. oz.	25.5 fl. oz.

For planktonic algae and free floating filamentous algal mats, application rates should be based on treating the upper 3 - 4 feet of water where the algae is growing. The minimum retreatment interval is 14 days. No more than ½ of the body of water may be treated at one time. Begin application near the shoreline and apply outward in bands to avoid trapping fish in coves or enclosed areas.

Before application, dilute at the rate of 1 gallon of **this product** in 10 gallons of water. For quickest results, apply when conditions are calm and sunny. A hand or power sprayer may be used. Treat shoreline areas first and then continue treatment, as needed, into main water body.

For algaecide application in aquaculture systems such as fish ponds and fish hatcheries, do not exceed 0.4 ppm metallic copper (¼ fluid ounce of product per 265 gallons of water).

For algaecide application in waters used for livestock: For water holding or storage tanks, stock watering ponds, tanks, and troughs, apply ¼ fluid ounce of **this product** per 265 gallons of water (8 milliliters per 1,000 liters) to achieve the desired 0.4 PPM (mg/L) of metallic copper for algae control. Product can be simply added to the water column (body of water) for even distribution. Where existing algae mats are present at time of treatment, most effective control will be obtained by breaking up mats and/or evenly dispersing diluted **product** over the algae mats. Apply **this product** as needed to control and prevent algae growth; more frequent applications may be needed in times of higher water temperatures.

DETERMINE VOLUME OF TANK, TROUGH OR POND WATER TO BE TREATED.  
Measure length (L), width (W), and average depth (D) in feet (ft.) or meters (m) and calculate volume using one of the following formulas:

\*For square or rectangular tanks, troughs and ponds:

$$L(\text{ft.}) \times W(\text{ft.}) \times D(\text{ft.}) \times 7.5 = \text{Gallons}$$

$$L(\text{m}) \times W(\text{m}) \times D(\text{m}) \times 1000 = \text{Liters}$$

\*For circular or elliptical tanks, troughs and ponds:

$$L(\text{ft.}) \times W(\text{ft.}) \times D(\text{ft.}) \times 5.9 = \text{Gallons}$$

$$L(\text{m}) \times W(\text{m}) \times D(\text{m}) \times 786 = \text{Liters}$$

### HERBICIDE APPLICATION

#### **For rooted and submerged plants**

Control of many rooted and submerged plants such as *Hydrilla* and *Potamogeton* can be obtained from use of **this product** to give metallic copper concentrations at 0.4 - 1.0 ppm. Choose the application rate dependent upon the density and stage of growth and the water depth from the chart below.

#### **Application Rates Fluid Ounces of product per 1,000 Sq. Ft. Surface Area**

Growth stage Relative Density	ppm metallic Copper	Average Depth in Feet			
		1	2	3	4
<b>(Low Density)</b>					
<b>Early Season</b>	0.4	6.5 fl. oz.	13.0 fl. oz.	19.25 fl. oz.	25.5 fl. oz.
<b>(Moderate Density)</b>					
<b>Mid Season</b>	0.7	11.0 fl. oz.	22.5 fl. oz.	33.5 fl. oz.	45.0 fl. oz.
<b>(Heavy Density)</b>					
<b>Late Season</b>	1.0	16.0 fl. oz.	32.0 fl. oz.	48.0 fl. oz.	64.0 fl. oz.

Before application, dilute at the rate of 1 pint of **this product** in 1.25 gallons (1 quart of this product 2.5 gallons)(1 gallon of this product in 10 gallons) of water. Application rates for depths greater than 4 feet may be obtained by adding the rates above to give the proper depth. Do not exceed a copper concentration of 1.0 ppm metallic copper (4.0 ppm product) in the treated water.

### FOR WATER HYACINTH CONTROL

The following mixture can be used as a **control** method for water hyacinth and other floating aquatic vegetation.

Mix 1 gallon of **this product** per 7 gallons of water. Apply directly to exposed vegetation to cover 8,700 to 20,000 sq. ft. [Mix 1 quart of **this product** per 1.75 gallons of water. Apply directly to exposed vegetation to cover 2,175 to 5,000 sq. ft.][Mix 1 pint of this product per 6.5 pints of water.] Do not exceed 1 pint of **this product** per 1,000 sq. ft. of treated surface area. In areas of heavy infestation, multiple applications may be required. Applications may be repeated after 14 days. Non-ionic adjuvants should be used with this product to improve dispersion and/or adhesion.

### DRIP SYSTEM APPLICATION FOR FLOWING WATER

**This product** should be applied as soon as algae or plants begin to interfere with normal or desired water uses. Heavy infestations and flows may cause poor chemical distribution resulting in unsatisfactory control. Under these conditions, continuous feed systems offer advantage.

Prior to treatment, it is important to determine the water flow rates. In the absence of weirs or flow determining devices for this information, water flow may be estimated as shown below.

$$\text{Avg. Width} \times \text{Avg. Depth} \times \text{Velocity in feet/sec.} \times 0.9 = \text{CFS (Cubic Feet/Second)}$$

Velocity is the time it takes for a floating object to move a given distance. For example, if a leaf travels 6 feet across the water in 60 seconds, the Velocity equals 0.1 (6/60 = 0.1) This measurement should be made as the average of at least three determinations taken at the treatment location.

Calculate the drip rate of **this product** from the chart below (based on heavy algae growth).

Water Flow Rate		Product drip rate		
CFS	Gal./Min.	Qts./Hr.	ML/Min.	Fl. Oz./Min.
1	450	1.8	29	1.0
2	900	3.6	58	2.0
3	1350	5.4	85	3.0
4	1800	7.2	113	3.8
5	2250	9.0	142	5.0

To maintain the metallic copper level at 1.0 ppm for 4 hours, calculate the amount of **this product** needed by multiplying Qts./Hr., ML/Min., or Fl. Oz./Min. by 4. The chemical must be introduced at a point of turbulence.

Place the required amount of **this product** into a tank equipped with a needle valve and set the drip rate as required using a stop watch and a measuring tube. Readjust as required if flows change. Distance of control will vary. Treatment points should be determined in the field and placed at the required intervals for control. Periodic maintenance treatments may be required.

For Drip-system Use in Livestock Watering Tanks: Tanks fed by a continuous flow of spring or well water may be equipped with a chemical drip system designed to meter-in **this product** based upon water flow rates. Systems should be adjusted to maintain a concentration of 0.4 PPM (mg/L) metallic copper in incoming stock water. Pre-dilute by mixing 1 pint of **this product** with 14.25 gallons [1 quart of **this product** with 28.75 gallons][1 gallon of this product with 115 gallons] of water. Calibrate metering valve to establish a drip rate of 1 fl. oz./min. per 10 gal./min. water flow rate or 40 ml/min. per 50 L/min. water flow rate. Treat continuously or as needed to control and prevent algae regrowth.

## TREATMENT NOTES

The following suggestions apply to the use of **this product** as an algaecide or herbicide:

- The product works best at temperatures at or above 60 degrees F.
- Treat when growth first appears or nuisance is first noted.
- Apply in a manner to insure even distribution in the treatment area.
- Retreat as required. The minimum retreatment interval is 14 days.

**Conversion factors:**     *cubic feet X 7.48 = gallons*  
                                  *one acre/foot = 326,000 gallons (one acre = 43,560 square feet)*

**To calculate number of gallons or liters:**

**For square or rectangular bodies of water:**     L(ft.) x W(ft.) x D(ft.) x 7.5 = Gallons  
  L(m) x W(m) x D(m) x 1000 = Liters

**For circular or elliptical bodies of water:**     L(ft.) x W(ft.) x D(ft.) x 5.9 = Gallons  
  L(m) x W(m) x D(m) x 786 = Liters

## **WARRANTY**

Read and follow all package directions carefully. To the extent consistent with applicable law, purchaser and user assume all risks associated with improper use, or application or other factors beyond Sanco Industries, Inc.'s control. Sanco Industries, Inc. warrants that this product conforms to the chemical description on the label and is reasonably fit for the purpose referred to in the directions for use subject to the risks referred to above. SANCO INDUSTRIES, INC. MAKES NO AND THE LAW SHALL NOT FIND ANY EXPRESSED OR IMPLIED WARRANTY OF MERCHANTABILITY OR FITNESS FOR ANY PARTICULAR PURPOSE. Purchaser's and user's sole remedy against Sanco Industries, Inc. for any cause of action related to the handling or use of this product shall be for damages, the amount of which shall not exceed the price paid for the product that causes the alleged loss, damages, injury or other claim. To the extent consistent with applicable law, in no event shall Sanco Industries, Inc. be liable for special indirect, incidental or consequential damages or expenses.

By purchasing or using this product purchaser or user accept the foregoing conditions of sale and limitation of warranty, liability and remedies.

Distributed by  
Sanco Industries, Inc.  
P.O. Box 11617  
Fort Wayne, IN 46859

## Is it important to know which type of algae or weed is in my pond?<sup>[stock tank?]</sup>

**YES.** Certain types of algae require a more concentrated treatment than others. It is important to know exactly which type of algae you are treating to ensure that you do not over treat or under treat your pond. Example of the different types of algae can be found below. Refer to this label and attached insert for appropriate use rates.

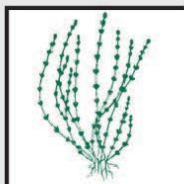
### ALGAE



**PLANKTONIC ALGAE:** Microscopic growth often visible as a greenish tinge suspended in the upper few feet of water. Severe blooms may resemble pea soup and actually thicken the water.

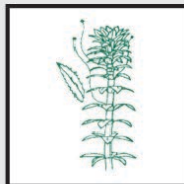


**FILAMENTOUS ALGAE:** Individual filaments a series of cells joined end to end that have a thread-like appearance. Often referred to as pond scum or moss. Forms surface "mats". Growth begins at the bottom and rises to the surface as a bubble filled mass. May also form fur-like growths on logs and rocks at the bottom.

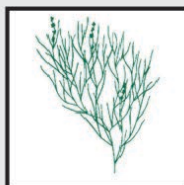


**CHARA ALGAE (Chara vulgaris):** Leaf-like structures whorled around hollow stem. Dense growth attached, but not rooted to bottom. May "carpet" large areas of a lake or pond bottom. Strong musky odor when crushed. May have a gritty texture due to mineral deposits on the surface. Do not confuse with higher weeds.

### SUBMERSED WEEDS



**HYDRILLA (Hydrilla verticillata):** Leaves whorled in groups. Hydrilla leaves have a serrated edge. Whorls of leaves are compact near the growing tips. Spacing between whorls increases further down the stem.



**PONDWEED (Potamogeton species):** Leaves are stiff, narrow and thread like. Stems branched with leaves alternately attached. Spreading leaves resemble a fan with an overall bushy appearance. Nutlets appear like beads on a string. Tiny green flower appears on spike along with nutlets above the water surface.